

PM-EMS

electronic engine monitoring system

Display of all relevant engine data on color, **transflective** TFT-display

Electronic monitoring with **alarm function**

Instrument representation with color scaling und markers



- ⇒ single and multiple display systems
- ⇒ any number of subdisplays
- ⇒ alarms with histogram
- ⇒ user definable checklists
- ⇒ tank monitoring (fuel, water, waste)
- ⇒ fuelmanagement
- ⇒ service reports
- ⇒ statistics
- ⇒ 2 engine option

⇒ 6.5" **transflective color-TFT** display, provides best readability, even at the glare of the sun

⇒ **270° indicators** for RPM

⇒ **bargraph indicators** for:

- oil temperature
- oil pressure
- coolant temperature
- fuel quantity (2, max 3)
- fuel flow
- voltage
- electrical current

⇒ **Logbook**

⇒ **NMEA input**

⇒ **additional display pages shows:**

- primary boat data
- tank level indicators
- GPS - data
- fuelmanagement
- video camera
- generator data indication

⇒ **optical and audible alarm** for all important engine data

⇒ **error log** for all alarm data

⇒ **interface to personal computer**

⇒ **networking via CAN-BUS**

PESCHGES
VARIOMETER

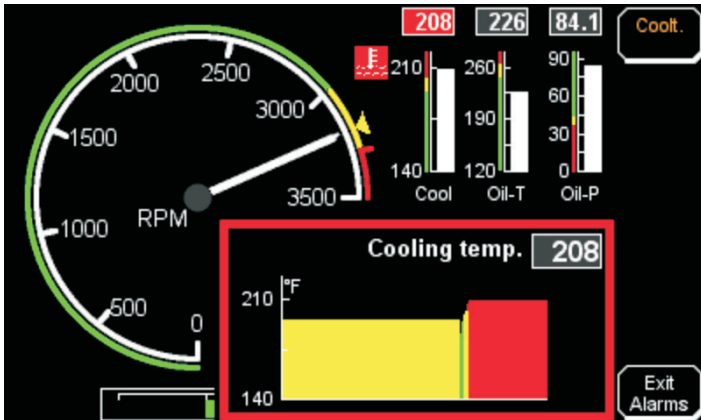
GmbH
Zieglerstr. 11,
D-52078 Aachen - Germany

Phone: +49 (0)241 180 59 400
Fax: +49 (0)241 160 19 51
E-mail: sales@peschges-marine.de
www.peschges-marine.de

PM-EMS = most innovative technology

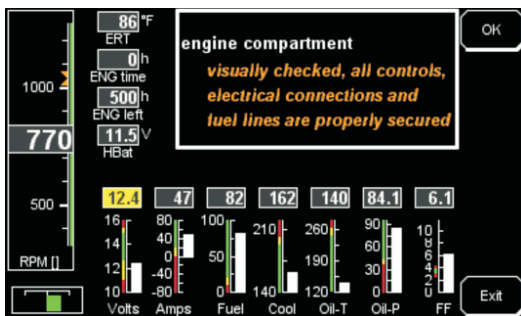
Additional pages makes the PM-EMS to a multifunctional displaysystem:

Data monitoring with alarms

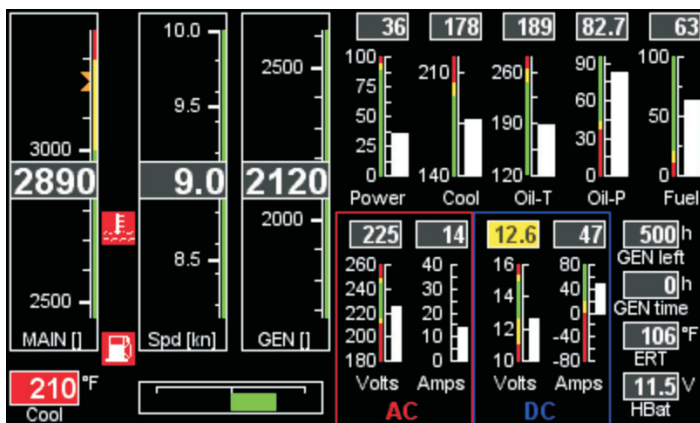


The integrated computer checks continuously the programmed limit of all important datas and when one exceeds, an audible and visible alarm appears. At the same time the user can check on a special screen the histogram of that data. With that function he is able to get an idea what happened before.

Interactive checklists



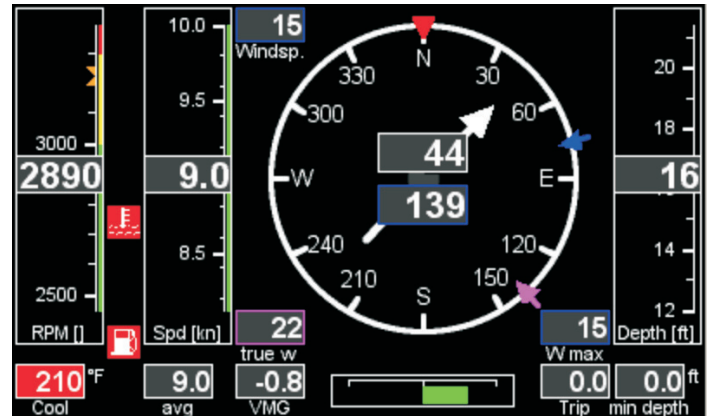
Generator page



- ↪ RPM of main engine
- ↪ gen. data
- ↪ electrical datas (AC and DC)
- ↪ boat speed

Primary boat data page

The PM-EMS provides on this page all necessary datas of the boat. It calculates speed and wind information coming from boat sensors and GPS (If available).



- ↪ engine RPM and coolant temperature
- ↪ boat speed
- ↪ compass
- ↪ depth
- ↪ wind speed and direction
- ↪ rudder position
- ↪ Bearing

GPS - Page



Tank page

